

JUNGWON TWO DEPARTURE

JUNGWON AB (RKTI)

CHOONGWON, KOREA, REPUBLIC OF (SOUTH)

ATIS *126.875 226.275
 GND CON/CLNC DEL
 275.8
 JUNGWON TOWER
 126.2 230.15
 JUNGWON DEP CON
 132.55 363.7

[USAF] SHL-2492 (MIL)

Rwy	Knots	60	120	180	240	300	360
* 18L	V/V(fpm)	360	720	1080	1440	1800	2160
* 18R	V/V(fpm)	380	760	1140	1520	1900	2280
* 36R	V/V(fpm)	370	740	1110	1480	1850	2220

RWY 36L DEPARTURE NOT AUTHORIZED

* Minimum climb rate to 8500

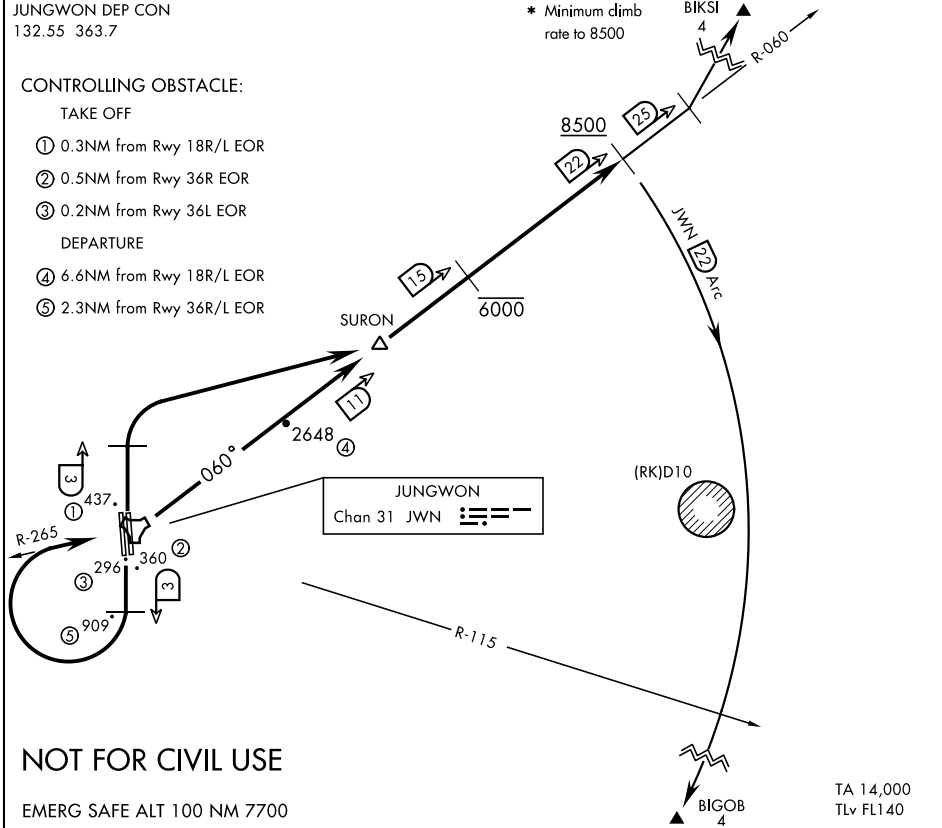
CONTROLLING OBSTACLE:

TAKE OFF

- ① 0.3NM from Rwy 18R/L EOR
- ② 0.5NM from Rwy 36R EOR
- ③ 0.2NM from Rwy 36L EOR

DEPARTURE

- ④ 6.6NM from Rwy 18R/L EOR
- ⑤ 2.3NM from Rwy 36R/L EOR



NOT FOR CIVIL USE

EMERG SAFE ALT 100 NM 7700

TA 14,000
 TLv FL140

DEPARTURE ROUTE DESCRIPTION

TAKE-OFF RWY 36R: Climb on track 003° until JWN TACAN 3 DME, then climbing right turn direct SURON (JWN R-060/11 DME), then track outbound JWN R-060. Cross 15 DME at or below 6000 and 22 DME at or above 8500. Thence

TAKE-OFF RWY 18L/R: Climb on track 183° until JWN TACAN 3 DME, then climbing right turn track inbound JWN R-265 to JWN and track outbound on JWN R-060. Cross 15 DME at or below 6000 and cross 22 DME at or above 8500, thence

BIGOB TRANSITION: Turn right to intercept JWN TACAN 22 DME ARC until JWN R-115 and climb to assigned altitude. Then direct BIGOB.

BIKSI TRANSITION: Continue track outbound JWN TACAN R-060 to JWN R-060/25 DME, then direct BIKSI and climb to assigned altitude.

JUNGWON TWO DEPARTURE

CHOONGWON, KOREA, REPUBLIC OF (SOUTH)

JUNGWON AB (RKTI)